



## CORPORATE OVERVIEW



336 South Service Road | Melville, New York 11747  
P: 516-336-6720  
[www.hauglandgroup.us](http://www.hauglandgroup.us)





Established in 1999, Haugland Group LLC (HG) is an infrastructure services holding company with subsidiaries and affiliates that provide a wide range of energy and civil infrastructure services. Our team brings decades of experience in the fields of engineering, design/build, best value, project management, project finance and development. We effectively manage a unionized labor force, and provide a broad range of construction services for clients in commercial and government sectors, both within the United States and its territories.

The complementary portfolio of services offered by our affiliate companies provides a competitive advantage in executing complex, multifaceted projects. Affiliate Grace Industries provides heavy highway, bridge, boardwalk, and airport construction, earthwork, drainage, design/build, and other civil services. HG affiliate Haugland Energy provides turnkey construction, electrical power generation, transmission, distribution, and substations. We employ a team of industry leading executives, project managers, estimators, welders, splicers, and linemen with decades of energy infrastructure experience.



#### HAUGLAND GROUP OWNS AND MANAGES



**Haugland Energy Group LLC**  
*Electrical construction*



**Haugland Virgin Islands Inc.**  
*Caribbean operations*



**Grace Industries LLC**  
*Civil construction and engineering,  
design-build*



**Inwood Material Terminal LLC**  
*Material logistics and recycling*



**Midnight Trucking Enterprises LLC**  
*Transportation logistics*

#### PERMANENT OFFICE LOCATIONS

Melville, NY  
Patchogue, NY  
South Plainfield, NJ  
St. Thomas, USVI  
Mechanic Falls, ME  
Wells, ME

## MAJOR CUSTOMERS

### CORPORATE

ABB  
BP Solar  
Calpine  
Crown Castle  
General Electric  
Holt Construction Skanska USA Building, Inc.  
Lighttower  
LS Cable  
Noble Environmental  
Siemens Westinghouse  
Skanska Walsh JV-LGA  
Verizon SunPower

### UTILITY

Con Edison  
Dominion Virginia Power  
Entergy  
Exelon (PEPCO, PECO) First Energy  
Eversource (NU, PSNH, NSTAR, WMECO)  
Florida Power & Light (FPL)  
Iberdrola (RGE, CMP, NYSEG)  
National Grid  
NextEra Energy  
PSEG-LI / LIPA  
PSEG NJ  
USVI WAPA

### GOVERNMENT

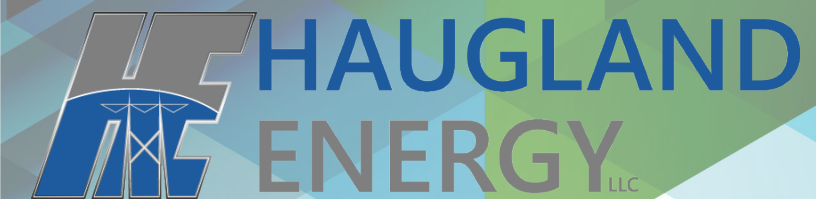
City of Long Beach  
Metropolitan Transit Authority  
Long Island Power Authority (LIPA)  
Long Island Rail Road (LIRR)  
Nassau County Office of Emergency Mgmt.  
Nassau County Dept. of Public Works  
New York City Dept. of Transportation  
New York City Engineering & Design  
New York State Dept. of Transportation  
NYS Office of General Services  
NYS Department of Sanitation  
NYS Parks Department  
New York Power Authority (NYPA)  
Port Authority of NY & NJ  
Suffolk County Dept. of Public Works



***Haugland Group's affiliates and subsidiaries have worked with an extensive list of clients in both public and private sectors.***







**H**augland Energy provides the following disciplines as it relates to construction and maintenance:

Substations  
Battery storage facility installation  
Power generation  
Electric OH/UG transmission and distribution  
Fiber optic cable installation  
Telecommunication ODAS, DAS CW TESTING  
Testing and commissioning services  
Renewable energy; solar, wind, biomass and fuel cell  
Extensive storm restoration services  
Horizontal Directional Drill (HDD)  
Gas Utilities – Complex construction, transmission & distribution, bare main replacements, new service installation and upgrade, meter replacement & relocation

***Haugland Energy has \$350+ million in annual sales, primarily working for utilities and telecommunication companies throughout the U.S. and its territories.***

#### **HAUGLAND ENERGY MEMBERS OF NATIONAL ELECTRICAL CONTRACTORS ASSOCIATION (NECA)**

##### **Board of Directors**

William Haugland  
Jim Kennedy  
Richard Weyer  
Tom Halpin

##### **Trust Funds Appointees**

Joseph Haugland  
Tom Halpin

##### **Apprenticeship Subcommittees Appointees**

Bill Leonard

## **MAJOR PROJECTS**

NEXTERA ENERGY – Turnkey installation of battery storage facility

RES AMERICA CONSTRUCTION – Construction, testing, commissioning, and start-up of an 8 MW/12 MWh Energy Storage Facility

GENERAL ELECTRIC – Turnkey construction: addition of synchronous condenser for the utility connection to Eversource at the Stony Hill 48C Substation

USVI WAPA – Hurricane restoration and mitigation

PSEG-LI – FEMA 406 mitigation storm hardening program

PSEG-LI – Far Rockaway substation hurricane restoration

CENTRAL MAINE POWER – 34.5 kV overhead transmission circuits rebuild

PSEG-NJ – Pipe type underground transmission cable installation

EVERSOURCE – Cape Cod – directional drilling & CIC replacement (5 miles)

NORWOOD – 115kV transmission line replacement (6.5 miles)

CALPINE – JFK Airport full substation outage testing and maintenance



**Established in 2018**, Haugland Virgin Islands Inc. (HVI) was formed in response to Haugland Group's ongoing commitment to rebuilding and increasing the resiliency of the U.S. Virgin Islands (USVI) after Hurricanes Irma and Maria in 2017. HVI has established an office in St. Thomas, USVI.

#### **WORK PERFORMED:**

Line construction  
Composite pole setting and installation  
Debris removal  
Height logistics  
Project development  
Street lighting

**CURRENT HVI STAFFING: 120 EMPLOYEES**

# USVI WAPA STORM RESTORATION



**Haugland Energy** was contracted by the Virgin Islands Water and Power Authority (WAPA) to provide emergency line crews and equipment for the restoration of electrical transmission and distribution systems after Hurricanes Irma and Maria devastated the area in late summer/early fall 2017.

In the weeks immediately following the storms, HE dispatched more than 700 crew members to the affected areas of the USVI, flying in Union crews from across the country. Overcoming the logistical hurdles of working on an island, more than 600 pieces of equipment, which were mobilized from several parts of the United States, were loaded onto multiple roll-on/roll-off (RORO) and load-on/load-off (LOLO) barges and ships to expedite the restoration efforts. Precision planning and exacting strategy was required to coordinate the massive effort, which involved the use of multiple airlines, private jet charters, barging companies, housing accommodations for on-island crews, communication and administrative planning, among other coordination complications which were often addressed in real time due to the urgency and immediate nature of the work.

Haugland Energy performed an initial damage assessment of more than 38,000 poles and related wires and transformers. Damage assessment was tracked on digital tablets equipped with GIS software customized and developed by HE. Affected poles were photographed before and after reconstruction, and work was reported daily to both WAPA and FEMA. Progress was monitored in real time through tracking reports of all crews operating on the WAPA system.

Energization status of more than 68,000 customer meters was evaluated by HE crews. Work was performed to determine if the meter socket, weatherhead and associated services were operable. Progress was photo-documented by tablet, and daily reports were filed on the installation of transformers and meters energized.

Innovative approaches to project execution, like those employed on the WAPA project, highlight Haugland Energy's ability to partner with and understand the complex needs of our clients.





# ENERGY CAPABILITIES

## OVERHEAD TRANSMISSION

### Services Include

Structure replacement, including wood, steel, hybrid (concrete/steel), and laminate poles  
Lattice tower demolition and reconstruction  
Conductor replacement – experience with all operating voltages  
Optical Ground Wire (OPGW) & All-Dielectric Self-Supporting cable (ADSS) installation  
ROW clearing  
Tree trimming  
Access road construction  
Matting services  
Environmental protection services  
Storm restoration services  
Railroad ROW and Hi-Rail capability

## SUBSTATIONS

### Services Include

New substation construction  
Substation expansion and upgrades  
Overhead and underground exit feeder construction  
Foundation work  
Control wiring and system automation  
Trenwa and duct bank construction  
Control house Installation  
Power plant maintenance and construction  
Transmission and distribution cable pulling, Jointing / splicing, terminating and testing  
Testing, commissioning, inspection and repair  
All civil work including: trenching, directional boring, duct bank and manhole installation

## TESTING AND MAINTENANCE

Haugland Energy provides testing and commissioning services for protection and control projects. Our knowledge of transmission, distribution and generation systems enables us to develop and execute plans tailored to a customer's tight outage schedules and requirements. We review design drawings, develop and execute test plans and provide technical direction to the electrical contractor or in-house wireman, and perform final in-service checks when commissioning new equipment.

### PRODUCTS AND SERVICES

Acceptance testing  
Functional trip testing  
Battery testing  
Infra-red scanning  
Cable fault locating  
Insulating fluid sampling and analysis  
Cable splicing  
Metering  
Circuit breaker maintenance  
Power quality testing and monitoring

Circuit breaker testing  
Retrofitting  
Commissioning  
Scada  
Electrical testing  
SF 6 services  
Emergency service contracts  
Transformer maintenance  
Transformer testing  
Troubleshooting

## *Currently Working on PSEG-LI FEMA Hazard Mitigation Program*

## UNDERGROUND TRANSMISSION

### Services Include

Maintenance and emergency services  
High Pressure Fluid Filled (HPFF) pipe type cable  
Solid dielectric cable installation  
Self-contained cable systems (low & medium pressure)  
Submarine systems  
Cryogenic cable systems  
Cable pulling capacity up to 80,000 pounds  
Cable system design including analysis and calculations for cable support  
Distribution cable supply, pulling, jointing/ splicing, terminating and testing  
Testing: dielectric fluid testing and processing, witness factory testing, commissioning  
All civil work including: trenching, directional boring, duct bank & manhole installation  
All necessary support equipment including cranes, vacuum & transfer pumps, splice trailers, splice tools, safety equipment, MPT equipment, generators, etc.



## *Haugland Group owns and maintains more than 2,000 pieces of heavy construction equipment, including:*

TSE-UP 800 underground line puller  
Trailer Spicelabs  
Pole trailers  
Trailer-Tensioners (various sizes)  
Trailer-Reel-Arbors (various sizes)  
Bucket trucks (various sizes)

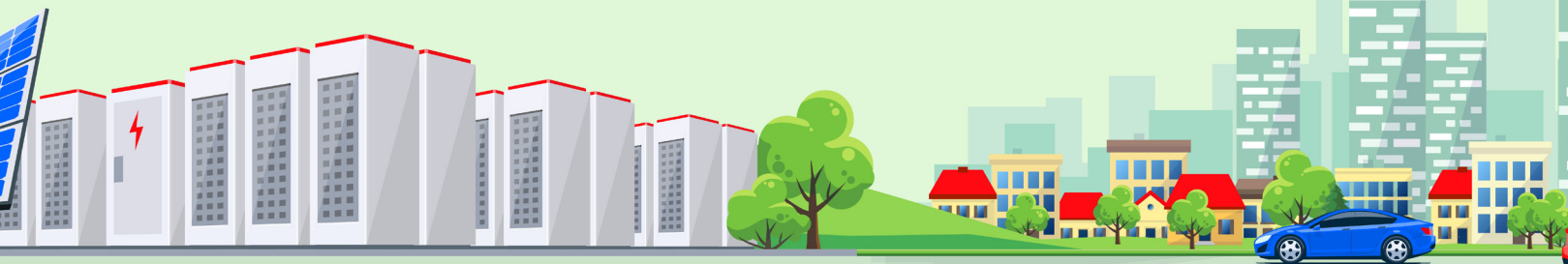
Digger Trucks  
Dump Trucks  
Excavators (various sizes)  
Light Towers  
Loaders (various sizes)  
Message Boards







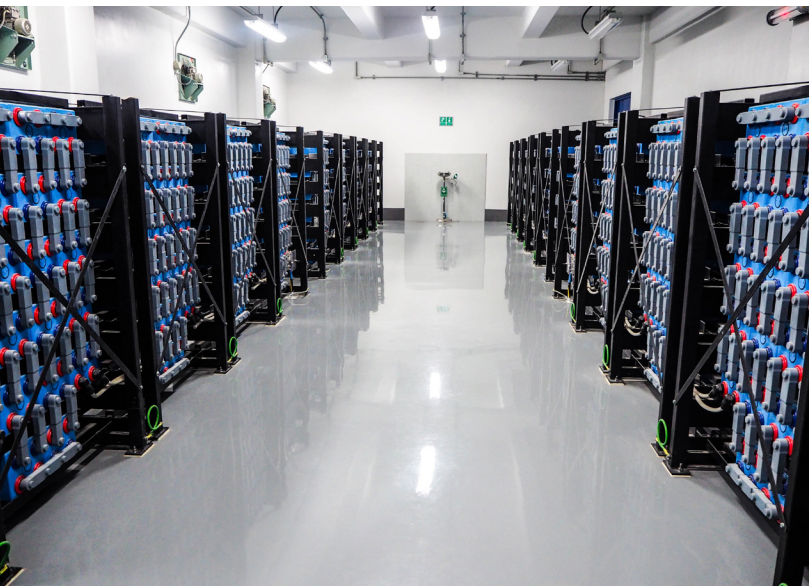
# BATTERY STORAGE FACILITY



ENERGY ⚡ STORAGE

**H**augland Energy provided turnkey installation of a confidential battery storage facility, along with site work to include foundations, building and commissioning support. Construction began in January 2018; despite a winter rife with extreme cold temperatures, snow and freezing rain, the facility was energized on August 1, 2018, marking a successful completion of the demanding project.

The facility has a 5-megawatt capacity, with the ability to power approximately 5,000 homes, providing as much as eight hours of critical back-up power to the electrical grid. The facility draws power from the grid during off-peak hours, and stores it in the lithium-ion battery racks to later be released during high-demand hours, which is especially critical in the summer months. Storage facilities like this are becoming critical to Long Island as the region takes steps to reshape its energy infrastructure to increase energy storage, renewable energy resources, and energy efficiency.



**H**awkeye Energy Greenport, owned and operated by Haugland Group, is a 54-Megawatt Pratt & Whitney FT8 SWIFTPAC gas turbine generating facility located in Greenport, NY, under contract with the Long Island Power Authority (LIPA).

Construction began in February 2003 in extreme winter cold. The project was designated by LIPA to be a “fast-track” unit, requiring that the facility be operational by the summer peak period of that year. Although the Pratt & Whitney SWIFTPAC units were factory-assembled and modularized to reduce field assembly and simplify mechanical work, there was still a substantial amount of civil construction to be completed at the site, including foundations and embedded conduit. Weather complications challenged the accelerated pace throughout the project, with the extreme cold temperatures followed by torrential spring rains. Despite significant ongoing weather-related hindrances, the construction schedule remained on time.

The testing phase concluded with commercial operations being achieved on July 3, 2003. The entire project – from land clearing to the first fire and commercial operation – was completed in 93 days; a notable timeline for a project of this size and scope.



HAWKEYE GREENPORT ENERGY



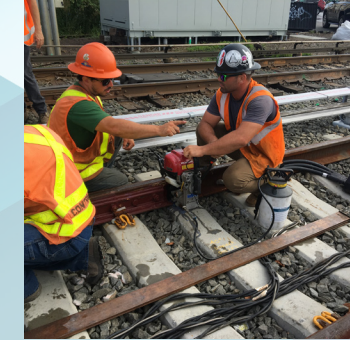
# Haugland Energy

(HE) served as a subcontractor for L.K. Comstock & Company Inc. on their contract with the Metropolitan Transportation Authority (MTA) to add a second track on the Long Island Rail Road (LIRR) Main Line Ronkonkoma Branch between Farmingdale and Ronkonkoma, NY. This project is part of New York Governor Andrew Cuomo's \$6.6 billion transformation and modernization of commuter rails initiative on Long Island. Due to the high visibility and magnitude of this infusion to Long Island's infrastructure, the project has been monitored closely by the Governor, prompting him to make frequent visits to the work sites, calling the LIRR the "backbone of the region's economy" during a recent visit.

HE's contract to supply and install all overhead and underground electrical work adjacent to the existing live track began in August 2017, and was complete October 2018. The aggressive timeline of this project, paired with the need to complete the work without causing any interruption to one of the busiest commuter train systems in America posed challenges. Haugland Energy's team performed these system upgrades and expansions with precision, resulting in the project being poised for completion ahead of schedule. This project is the first time that the LIRR has contracted an outside organization to perform system upgrades and expansion.

Due to HE's extensive breadth of expertise, its initial contract award was increased with an expanded scope of work. A unique working relationship with Haugland Group affiliate company, Grace Industries, allowed HE to quickly and efficiently fulfill all expanded project requirements. HE's scope of work includes, but is not limited to:

- Installation of 470 35' timber poles
- 13 miles of Messenger Wire for Communications, Fiber, and Signals with support and grounding hardware
- Removal and replacement of existing sub ballast when installing conduits beneath live track
- Exposed RGS and PVC conduit
- 14 Grade crossings
- Buried hand holes
- Crossings and signals
- Excavation for signal, communication and traction power conduit installation
- Form and pour concrete pedestals for traction power
- Installation of signal and wayside equipment, including all connections of conduits and cables
- Utility mark-outs
- 72 strand Fiber Optic and 25 pair copper express cables on messenger, splicing, snowshoes and testing
- 36 strand Fiber Optic and 25 pair copper local drop cables, terminations and testing
- 37 conductor #14 and 2 conductor #1/0 Signal cable on messenger
- PSEG Metered Power Drops

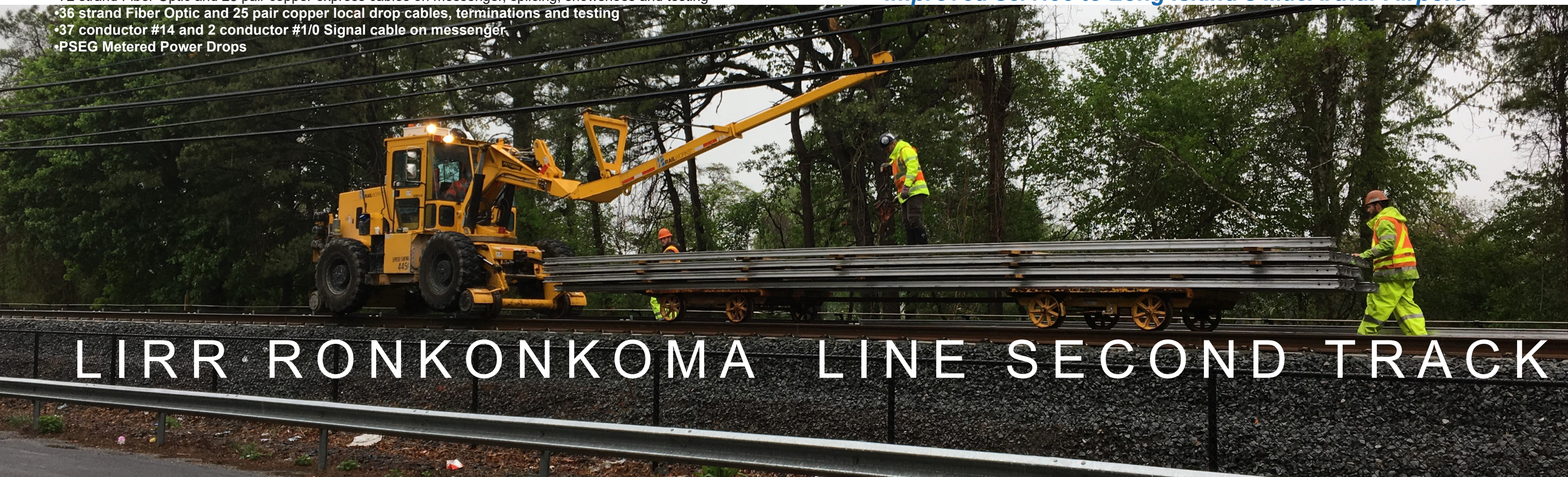


## Grace Industries

provided civil support to HE, and is well versed with the safety requirements and procedures associated with working with the LIRR adjacent to live tracks. Grace performed all work under scrutiny and support of LIRR flag persons; supported operations include:

- Conduit excavation and backfill for all signal, communication and electrical cabling, including cross track digs on live track and gap jumper conduit at grade crossings
- Test Pits
- Full depth asphalt restoration at roadway grade crossings
- Installation of assembly house foundations for 10x40, 8x20 and 8x14 house & signal hut foundations, and 8x10 Battery Hut enclosures
- Excavation for Cable Vaults
- Excavation and Installation of:
  - TM-14 transformer vaults
  - CM-11 manhole splice vaults
  - precast signal and gate foundations
  - cable troughs

***The addition of this second track will enable the LIRR to increase the frequency of their service on the Ronkonkoma line, including improved service to Long Island's MacArthur Airport.***



# LIRR RONKONKOMA LINE SECOND TRACK



# CIVIL CONSTRUCTION



**GRACE INDUSTRIES** is an affiliate of Haugland Group, providing heavy highway, bridge, boardwalk and airport construction, earthwork, drainage, design/build and other civil services. Our expert field, estimating and office personnel have the knowledge and expertise to execute a broad scale of projects on time and on budget, while maintaining our impressive safety rating.

**Grace Industries has extensive experience in:**

- Airport taxiways and runway realignment/reconstruction
- Kerfing for new lighting
- Removal & installation of new guidance systems
- Milling & paving
- Complete bridge reconstruction
- Highway interchange reconstruction
- Design-Build
- Geotechnical construction
- Utility relocation and duct bank installation
- Complex drainage system installation
- Highway/roadway resurfacing
- Extensive pre-cast/cast-in-place concrete construction
- Emergency response/storm restoration

**MEMBERSHIPS**

- Associated General Contractors (AGC)
- General Contractors Association (GCA)
- Long Island Contractors Association (LICA)



**MAJOR PROJECTS**

**JOHN F. KENNEDY AIRPORT – TAXIWAY CONSTRUCTION**  
Time sensitive paving coordination  
Complete taxiway lighting system and guidance sign removal and replacement

**LAGUARDIA AIRPORT VARIOUS TAXIWAY RECONSTRUCTION PROJECTS – PANYNJ**  
Time sensitive paving coordination  
Extensive full depth pavement reconstruction  
Complete taxiway lighting system and guidance sign removal and replacement

**BAY PARK SEWAGE TREATMENT PLANT PERIMETER BERM AND FLOOD WALL-NASSAU COUNTY**  
Auger cast pile installation  
Cast in place concrete retaining walls  
Extensive utility relocation

**ROUTE 347 DESIGN BUILD-NYSOT**  
Drainage installation  
Deep foundation installation  
Noise wall construction

**ROCKAWAY BOARDWALK DEMOLITION & CONSTRUCTION – SKANSKA AND NYCEDC**  
Steel pipe & H-pile installation  
Extensive pre-cast substructure components  
Sand cut-off wall installation

**ROUTE 110 AND NORTHERN STATE PARKWAY INTERCHANGE – NYSDOT**  
Complete bridge removal and replacement  
Significant earthwork: GRES wall construction  
Extensive utility relocation

**HURRICANE SANDY RECOVERY – VARIOUS AGENCIES**  
Demonstrated ability to mobilize in emergency situation

***Grace Industries is a Pre-Qualified Approved Airside Paving Contractor for the PANYNJ***



# TRUCKING SERVICES



Midnight Trucking Enterprises LLC specializes in Transportation Logistic Services

Midnight Trucking offers total transportation and logistics solutions. Our specialized fleet allows for us to customize every move as needed. We pride ourselves in our modern fleet and ability to deliver on time and safely.

## OUR FLEET CONSISTS OF ALL CURRENT EMISSION VEHICLES, INCLUDING:

Tri-Axle Dump Trucks  
Flow Boy Trailers  
Dump Trailers  
Low Bed Trailers (for equipment relocation within an airport)

*Midnight Trucking can  
reduce the overall trucking  
cost per ton to move material  
through its relationship  
with affiliate company  
Inwood Material Terminal*



## Inwood Material Terminal is a full service marine terminal with services that include:

- Aggregate distribution of concrete and drainage stone
- Dump facility for all of the millings on a project
- Stevedore services
- Utilization of our own barges to reduce transportation costs, truck traffic and truck emissions

## INBOUND

Clean Concrete  
Mix Debris  
Millings  
Concrete

## OUTBOUND

DGABC  
Screened Millings  
¾ Clean Recycled  
Oversize Clean Recycled  
1/4", 3/8", 3/4", 1 ½" Quarry Friction Stone

## FACILITY

Truck Scale  
Office Space  
Controlled Access  
Marine Terminal

## ADDITIONAL SERVICES

Trucking  
Stevedoring Services  
Barging



# MARINE TERMINAL SERVICES



# PENDING JOBS



Grace Industries has pending submitted bids, and bids currently being generated for the following select Owners:

- Meccon

Metro North

NYS Department of Transportation

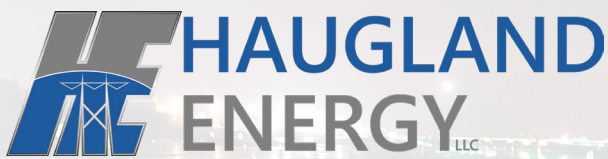
NYC Department of Park & Recreation
- National Grid USA

PETK Inc.

Skanska-Walsh

Steiner Building NYC

Suffolk County DPW



Haugland Energy has pending submitted bids, and bids currently being generated for the following select Owners:

- ABB

Avangrid

Burns & McDonald

CMP

ConEd

Entergy

FPL

NYPA
- NYSEG

NextEra Energy

PEPCO

PSE&G LI

PSE&G – NJ

Turner Construction

US Power Generation

USVI WAPA

*Haugland Energy was recently awarded the installation of 2<sup>nd</sup> 69 kV Feeder Cable by PSEG-LI from Canal to Southampton*

*WAPA recently approved an increased cost adjustment to their existing contract, extending the work through December 31, 2019*

**GRACE INDUSTRIES WAS RECENTLY THE LOW BIDDER ON A PROJECT FOR THE PANYNJ AT JFK INTERNATIONAL AIRPORT**

**ALL HAUGLAND GROUP DIVISIONS WILL BE UTILIZED THROUGHOUT THE CONTRACT**



*Haugland Energy Has Received NECA “Zero Injury” and “Safety Excellence” Awards for Three Years*

## EXPERIENCE MODIFICATION RATE

Year	EMR	On Years
2018	0.67	16-15-14
2017	0.71	15-14-13
2016	0.83	14-13-12
2015	0.91	13-12-11
2014	0.99	12-11-10

## GRACE INDUSTRIES LLC

Year	Hours	TCIR
2017	243,297	2.47
2016	288,657	2.08
2015	241,510	0.80
2014	141,858	0.00
2013	216,823	2.77

## HAUGLAND ENERGY GROUP LLC

Year	Hours	TCIR
2017	1,124,674	1.60
2016	523,509	0.38
2015	176,467	0.00
2014	73,266	0.00
2013	24,220	0.00

**SAFETY STATISTICS**





**HAUGLAND GROUP**

336 South Service Road | Melville, New York 11747  
P: 516-336-6720  
[www.hauglandgroup.us](http://www.hauglandgroup.us)